

MOVETO

CHISWICK EDITION

IN PRINT | ONLINE | ON THE GO

MOVETO CHISWICK
ISSUE 310, Feb 22-Mar 01 2023
To advertise call 020 8997 3000. Published by Barcroft Media - The Home of Property Publishing
Please contact our local offices on 020 8997 3000
#followus on the featherstone leigh, fletchers, dexters

featherstone leigh
featherstoneleigh.co.uk
ALBANY COURT CHISWICK
An impressive one bedroom flat for sale, with an open plan kitchen at the front of the flat, close to the river and the canal, close to transport links, shops and schools.
Call 020 8997 3000
£560,000
CHISWICK
020 8997 3000

featherstone leigh
featherstoneleigh.co.uk
ALBANY COURT CHISWICK
An impressive one bedroom flat for sale, with an open plan kitchen at the front of the flat, close to the river and the canal, close to transport links, shops and schools.
Call 020 8997 3000
£560,000
CHISWICK
020 8997 3000

FLETCHERS
Estate Agents
Haverfield Road, W4
£3,000,000
An immaculately presented six bedroom home in the heart of Chiswick, benefiting from three bedrooms, a separate utility room and a landscaped garden, energy rating 3C.
020 8997 3000
chiswick.sales@fletchers.co.uk
fletchers.co.uk

Dexters
London Property Professionals
Netheravon Road, W4
A fantastic three storey period house with massive potential. The house requires a full refurbishment but once done, will consist of a stunning five bedroom home with large garden. The property is offered chain free, energy rating 4.
Dexters Chiswick 020 8995 4321
£2,800,000
Call 7 days a week Sun - 8pm @dexterschattingtons

Dexters
London Property Professionals
Netheravon Road, W4
A fantastic three storey period house with massive potential. The house requires a full refurbishment but once done, will consist of a stunning five bedroom home with large garden. The property is offered chain free, energy rating 4.
Dexters Chiswick 020 8995 4321
£2,800,000
Call 7 days a week Sun - 8pm @dexterschattingtons

MEDIA PACK

2023

MOVETO

MOVETO.CO.UK

DISTRIBUTION
NOW GPS
TRACKED

AD SPECIFICATION

Size	Type Area	Trim	Bleed
Double page spread	590mm x 390mm	610mm x 410mm	630mm x 430mm (10mm all edges)
Full page	285mm x 390mm	305mm x 410mm	325mm x 430mm (10mm all edges)
Half page	285mm x 190mm	-	-
Front page footer	285mm x 66.5mm	285mm x 66.5mm	285mm x 66.5mm

TECHNICAL SPEC

Production MoveTo's easy-to-use, web-based production system. Or email transfer of InDesign files, jpegs, pdfs or Illustrator files.

Copy date Copy due Friday for New Homes and Monday for residential one week prior to publication. Call for more details.

CIRCULATION

W4 1

W4 2

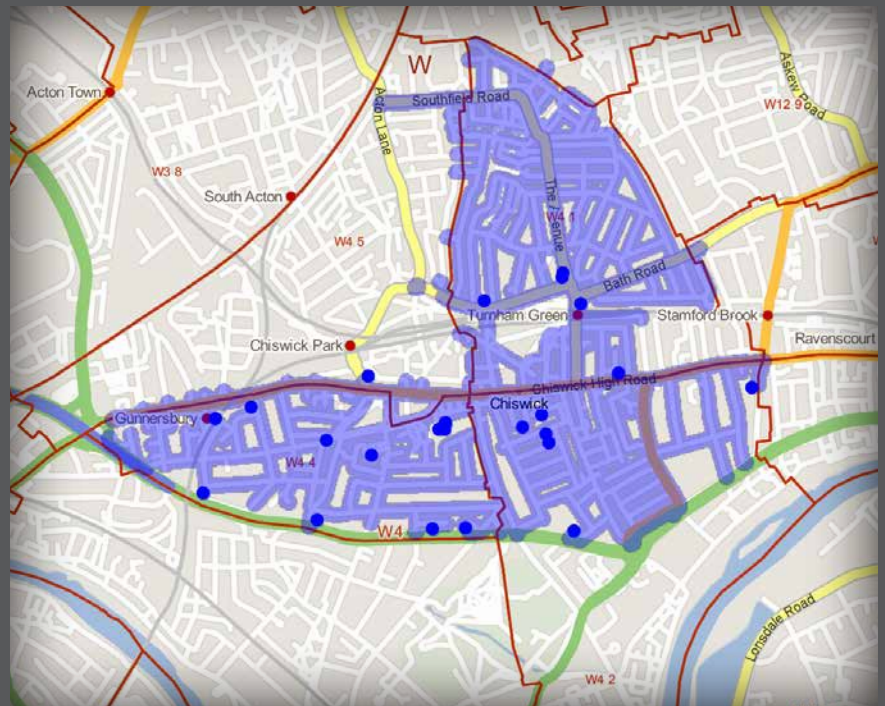
W4 4

Pick up copies 200

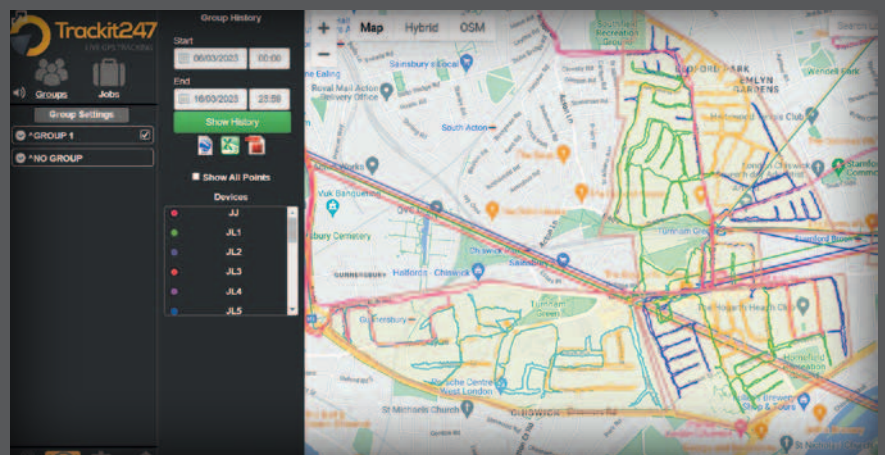
Door-to-door 8,000

Total print run 8,200

Readership 12,000



EXAMPLE OF TRACKED DISTRIBUTION MAP:



CONTACTS

Estate Agent Advertising

David Hughes 07798 676 351
d.hughes@barreffield.co.uk

New Homes Advertising

Fiona Brown 020 8390 9242
f.brown@barreffield.co.uk

Editorial

editorial@barreffield.co.uk

Production & Distribution

Dan Rees 020 8390 9242
d.rees@barreffield.co.uk

The door-to-door distribution of MoveTo is GPS tracked using Trackit247.com live GPS tracking system, for more details please give us a call 020 8390 9242 or email info@barreffield.co.uk